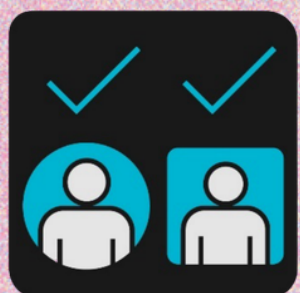
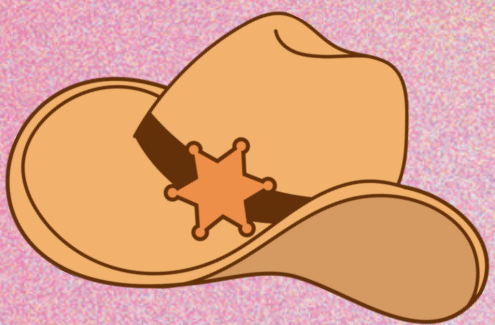


PASSWORD OR PASSPHRASE?

Password = one word
e.g. banana

Passphrase = sequence of random words, symbols and numbers
e.g. Banana35Hou\$e0ceanCowboy!



PASS-



PHRASES

USE STRONG AND UNIQUE PASSPHRASES

A **passphrase** is a stronger type of password. It is very hard for other people to guess.

Using strong and unique passphrases is one of the best ways to protect your accounts.

You should use a different passphrase for each of your online accounts.

STRONG PASSPHRASES INCLUDE:

4 or more random words
15 or more letters, numbers and symbols.

You can include a mix of capital and lowercase letters.

You can also use symbols such as: a dash (-), dollar sign (\$), an email @ sign.

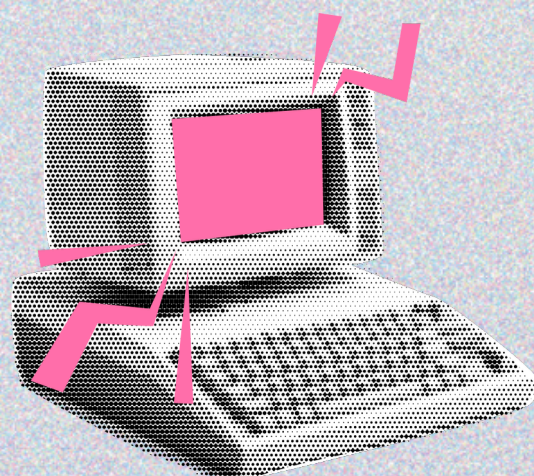
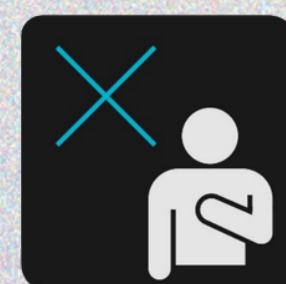
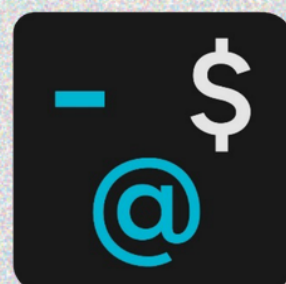
You shouldn't use any personal information in your passphrases. e.g pet names, birthday etc...

WHY THE CHANGE?

Passwords are outdated.

Cybercriminals have developed smart ways to crack them.

It's time to use passphrases instead.



Can't remember them all?
Use a password manager to help you.

For more information head to www.actnowstaysecure.gov.au

