

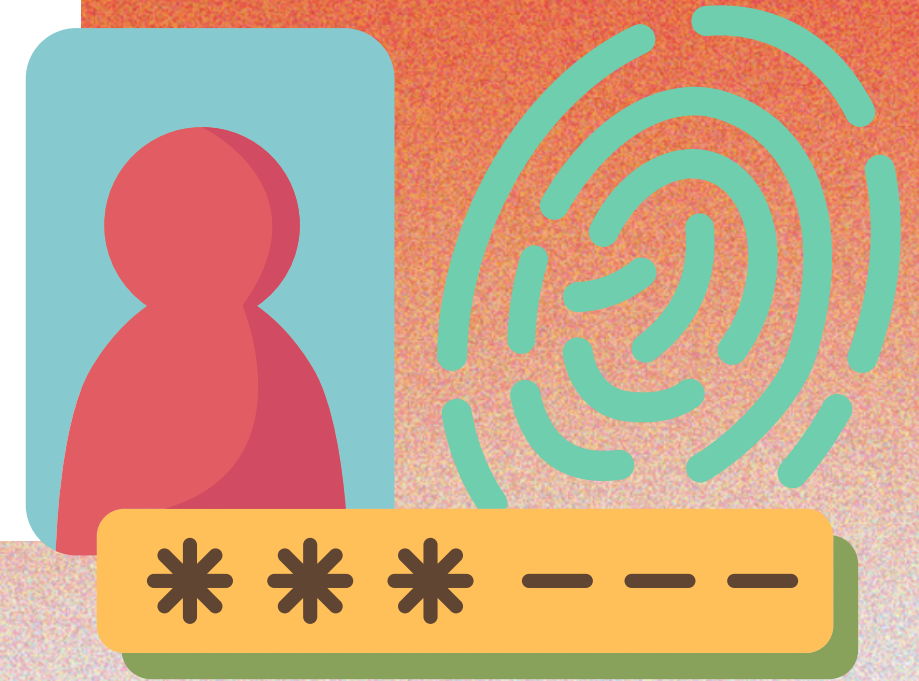
MULTI-FACTOR



AUTHENTICATION

WHAT IS IT?

Multi-factor authentication (MFA) is a cyber security method where two or more proofs of identity are required to log into an online account.



WHY IS MFA IMPORTANT?

MFA adds an **extra layer of security and protection** by requiring more than just a password/passphrase. That way, even if your passwords get leaked, another layer of security can protect your account from hackers.

DIFFERENT TYPES OF MFA

- PIN
- Email/SMS
- Eye/fingerprint scan
- Facial/voice recognition

and more!

HOW TO SET UP MFA

- Each online service will have their own process.
- Instructions to turn on MFA is usually accessible in privacy settings.
- If MFA is unavailable, use strong unique passphrases.